

# COMPACT

## Compact Projector

with BoardFree Technology

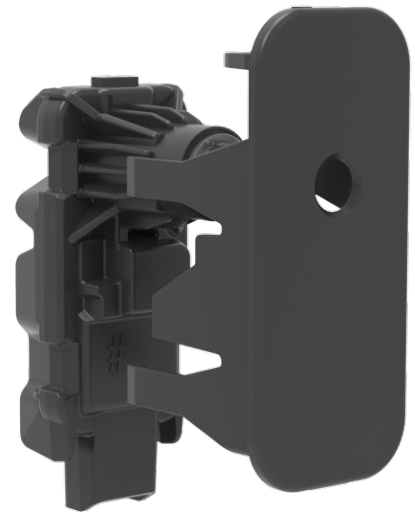
### Features

- Advanced Optics for Clear Images
- Integrated Thermal Management
- Automotive Grade Components
- Fully Sealed Optics & Electronics
- Thermal Protection



### Specifications

- 12 Volts / 9-20 (Operational Voltage)
- Step Down LED Driver
- AEC Q101 Certified
- Maximized Power Efficiency



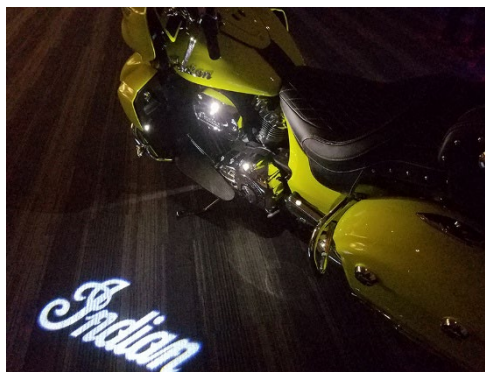
### Designed with Durability in Mind

- IP67- Water/Dust Proof
- Shock and Vibration Resistant
- Corrosion-Resistant
- Built-in Sealed Connector

### The Micro Projector.

Built with fully sealed electronics and optics and with corrosion and vibration-resistant materials, Innotec's Micro Projector is the most durable option on the market. Innotec's Micro Projector allows you to showcase **bright and crisp** images on almost any surface.

# Compact Projector ■ Uses

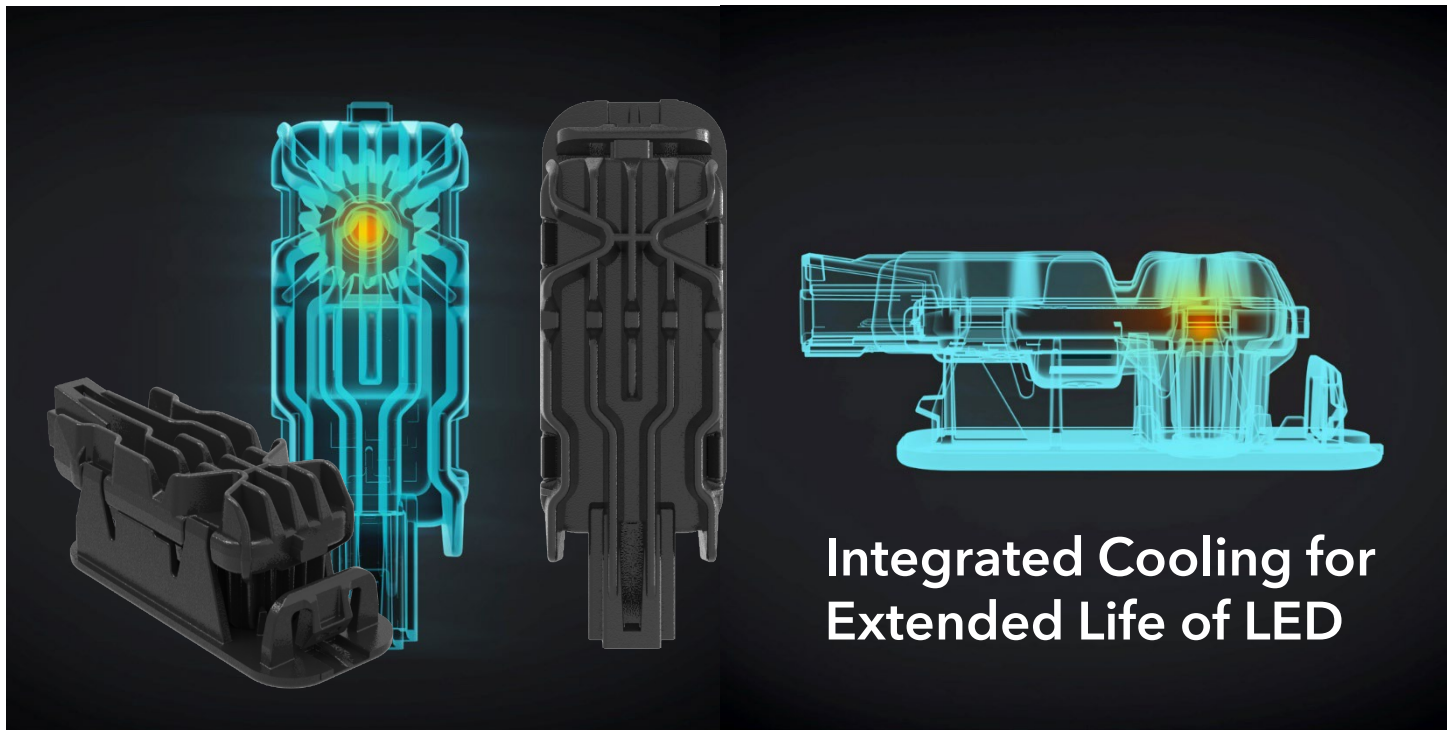


Gobo image slides are made of glass to prevent warping and fading of color.

Images options and colors include:

Black/white, Single color, Multi-color, 3D (shadow effect), or any combination of the above options.

# Compact Projector ■ Details



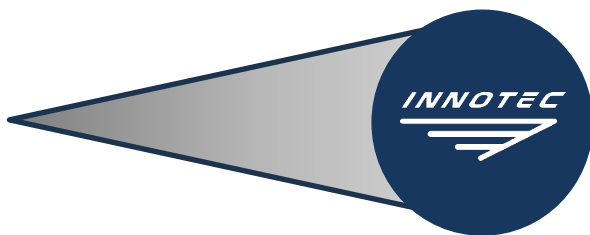
## Dimensions



## Projection Options

### Wide Beam Projection

From 500mm (19.65") distance, the projected image OD is 375mm (14.76")  
Projected image is >800lux



### Narrow Beam Projection

From 500mm (19.65") distance the projected image OD is 125 (4.92")  
Projected image is >4000lux

