

■ Interior Task Lamp

with BoardFree Technology

Features

- Reverse polarity protection
- Part presence detection
- ESD compliance
- EMC compliance
- Turn on voltage: 9V
- 72mA at 13,5V



Designed with Durability in Mind

- Fully sealed electronics
- Connector integrated into housing
- Shock and vibration-resistant
- Mounting and release clip integrated into lens
- No see-through lens when lamp is off
- Optimized optics for homogeneity

Built with BoardFree® Technology

BoardFree® is a patented & revolutionary LED Lighting technology that offers enhanced flexibility and durability, free from the design limitations of conventional LED products. Our products are exceptionally robust, making them an ideal choice for industrial applications that require reliable and long-lasting LED lighting solutions.

Small ■ Interior Task Light



Small Interior Task Light

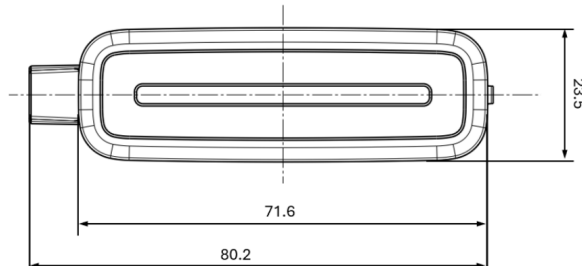
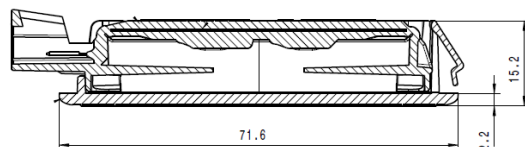
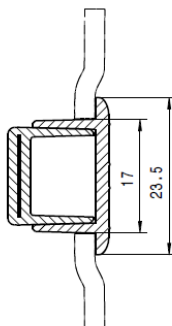
A smart, compact interior task light designed to fit seamlessly into the headliner or other vehicle surfaces. Featuring 90 CRI premium light quality and excellent homogeneity, the non-see-through lens ensures a clean, finished appearance when the light is off.

Manufactured on a fully automated, high-capacity production line for consistent quality and scalability with an annual capacity of 4 million pieces.



Features

- 90 CRI LED
- White Color
- Maximum Luminance 42,1 LUX
300mm in 'y' direction and 0mm in 'x' direction
- Minimum Luminance 2,8 LUX
300mm in 'y' direction and 490mm in 'x' direction



Innotec Part Number	Color	Connector	Mounting	Voltage	Amperage	Regulation
IL03709	90 CRI - White	2-Pin 4B0971832	Clip	9-16V	50mA	NA