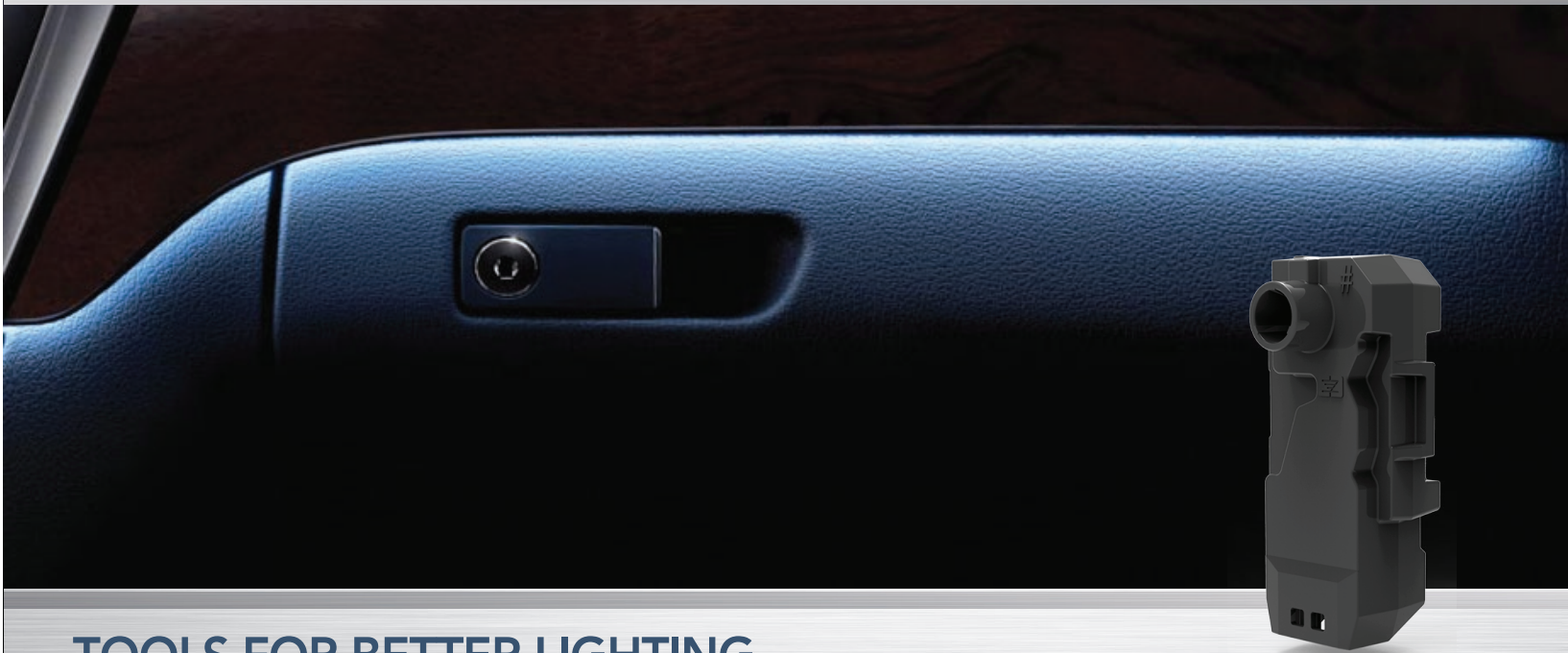


LED Ambient light module

Built with BoardFree® Technology

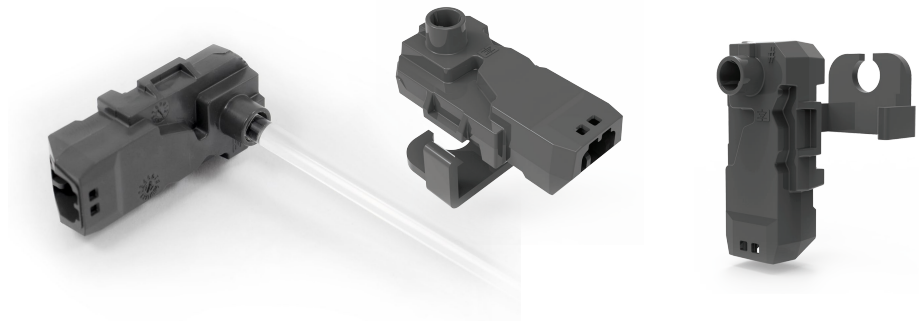


TOOLS FOR BETTER LIGHTING

Innotec's patented BoardFree technology offers LED lighting with the most rugged LED light engine in the industry. Our advanced lighting designs allow us to manufacture water, corrosion, and impact resistant LED lights that perform in extreme conditions.

Features:

- Fully sealed electronics
- Shock and vibration resistant
- Corrosion resistant
- Light pipe attachment features
- Dirt & dust proof



Applications:

- Door accent
- Dashboard accent
- Controls
- Door pockets
- Center console
- Cup holders





FLEXIBILITY OF DESIGN

Our ambient lighting platform offers the versatility and design flexibility to fit many lighting applications. Choose from the options below to build a lighting solution that is right for you.

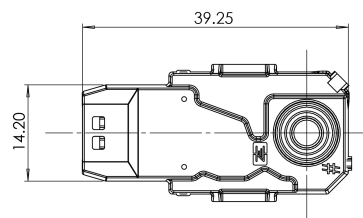
Choose light pipe profile:



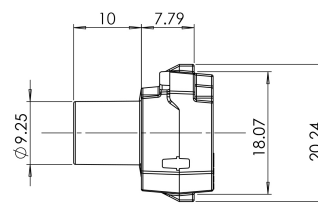
Choose LED color:

- ☐ White
- ☒ Blue
- ☐ Green
- ☐ Red

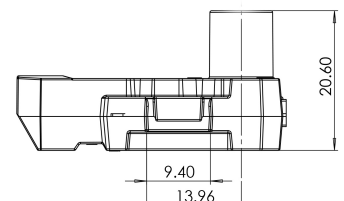
Module Dimensions:



TOP VIEW



BACK VIEW



RIGHT VIEW

Product Data:

Voltage	Current	Color	Material	LED's	Rating	Certification
12 VDC	20 mA	Multiple	Acrylic/ABS	1	IP67	UL pending