

# Revolutionary **BoardFree**<sup>TM</sup> LED Lighting with Unmatched Durability

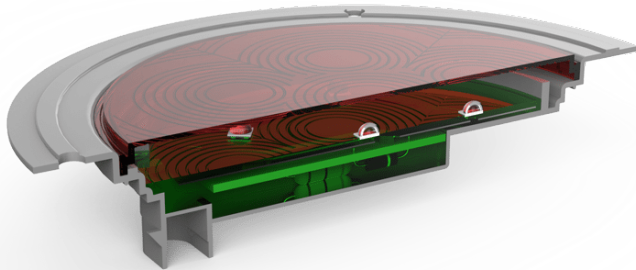


## Innotec

Innovative Automated Manufacturing - Celebrating 30 years - Global Locations: we will manufacture your products in your region

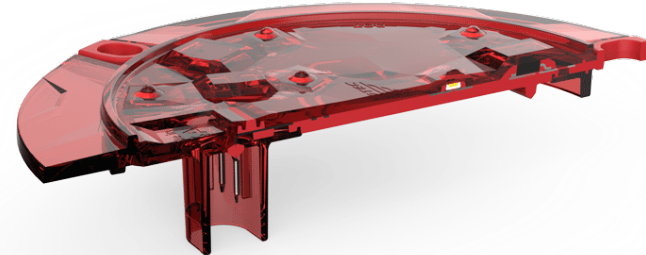
# Built with BoardFree™

A revolutionary LED technology that allows for increased performance, added flexibility and unmatched durability without the design constraints of traditional LED products.



## Competitor's Commercial Vehicle Brake Light

- Final construction has several components glued and snapped together.
- Air gap acts as a thermal insulator.
- Unprotected electrical components.
- Outer lens is easily damaged and susceptible to leaks.
- Overall part thickness.



## Innotec's Commercial Vehicle Brake Light

- Final construction is a bonded fully sealed part.
- Frame, lens and optics are molded together.
- Superior thermal management
- Integrated, sealed connector.
- Automated assembly.
- Space saving design.



### Durable

By utilizing a direct overmold process, components and design are optimized for durability.



### Water-Sealed

Direct overmold process creates a complete water-sealed product.



### Quality

Innotec's fully automated manufacturing process improves the overall reliability of the product.

# Marker lights for commercial vehicles, heavy equipment, and utility trailers

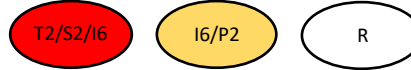


## 4" Round STT and marker lights



- Available in surface and grommet mount
- Meets SAE S2, T2, I6, P2, and R specifications
- Sealed and greased 3 Pin AMP connector

Colors



## 6" Oval STT, ST, and marker lights



- Available in surface and grommet mount
- Meets SAE S2, T2, I6, P2, and R specifications
- Sealed and greased 3 Pin AMP connector

Colors



## 3/4" Clearance and marker lights



- Meets SAE P2, PC2, and L specifications
- Connector options: bullet, flying leads, 2 Pin AMP

Colors



## License light



- Meets SAE L specifications
- Sealed and greased 2 Pin AMP connector



Can be mounted any direction and meet DOT specifications



Resistant to impact, corrosion, and harsh chemicals



# Micro Bright™ Beacon Lights – Be Safe, Be Seen



**100 Series**  
SAE J845 Class 1, ECE R65, R10, IP67



**200 Series**  
SAE J845 Class 2, ECE R10, IP67



**300 Series**  
SAE J845 Class 3, ECE R10, IP67

### Product Features

- Exceeds global certification requirements
- Low profile, ultra rugged
- Completely sealed
- Solid over-mold construction

### Product Applications

- Construction equipment
- Agriculture equipment
- Delivery vehicles
- Work trucks, lawn, and snow
- Material handling
- Emergency vehicles

### Mounting Options



Sealed Surface Mount



Sealed Riser Mounts



Magnetic Mount



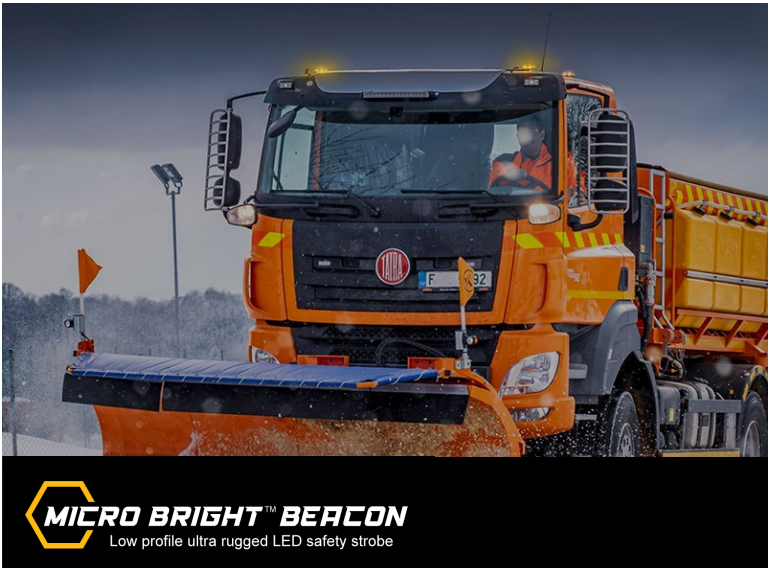
Pole Mount



DIN Pole Mount

### Part Builder

BEACON SERIES	VOLTAGE	COLOR	BASE STYLE	CORD STYLE
2	12	A	M	3
1 = 100 series	12 = 12V	A = Amber	X = Surface mount	X = No cord
2 = 200 series	24 = 24V	G = Green	P = Pole mount	1 = 8" Wire harness
3 = 300 series		R = Red	M = Magnetic mount	2 = 14' Coil + cigarette plug
		B = Blue	D = DIN mount	3 = 12' Straight + cigarette
		W = White	O = Outer mount riser base	Plug w/On/Off
			I = Inner mount base	



Available colors



## 7" Linear light - IDC



IDC  
(insulation displacement  
for use with 18-gauge wire)

- 15 LEDs
- 12 Volts / 3 Watts / 300 lm
- IP 67 rating
- LED color temperature 2700K
- 191mm long x 17mm wide x 6mm tall  
connector 11mm tall

## 7" Linear light - WPJ



WPJ - Sealed  
locking connector

- 15 LEDs
- 12 Volts / 3 Watts / 300 lm
- IP 67 rating
- LED color temperature 5000K
- 191mm long x 17mm wide x 6mm tall  
connector 26mm tall

## 14" Linear light – Flying Lead 12V



Flying Leads  
(20-gauge  
wire)

- 30 LEDs
- 12 Volts / 6 Watts / 600 lm
- Flying Leads (2 Wire) 1830mm
- IP 67 rating
- LED color temperature 6500K
- 407mm long x 17mm wide x 6mm tall

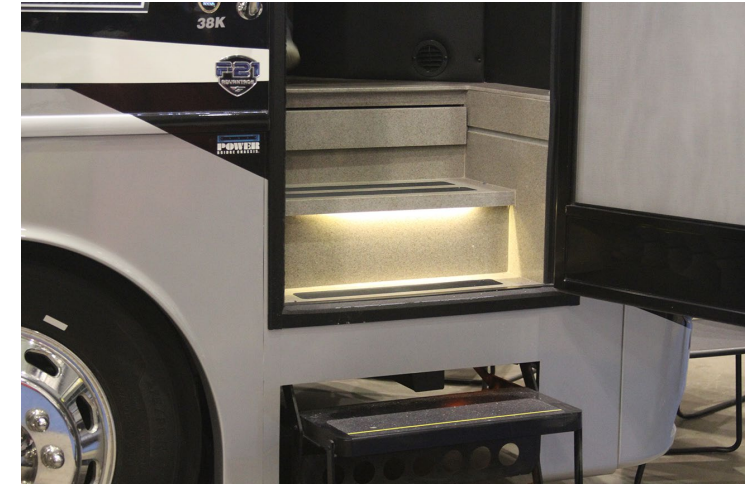
## 14" Linear light - Flying Lead 24V



Flying Leads  
(20-gauge  
wire)

- 30 LEDs
- 24 Volts / 6 Watts / 600 lm
- Flying Leads (2 Wire) 1830mm
- IP 67 rating
- LED color temperature 6500K
- 407mm long x 17mm wide x 6mm tall

*Additional lengths, colors, and color temperatures are available. Please contact our sales group for details.*



Bonded construction - Shock and vibration resistant



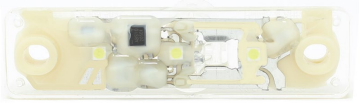
Sealed - Protects against water/dirt ingress



# 3 LED Light bars (50-100 lumens typical)



## Standard white 3 LED light bar



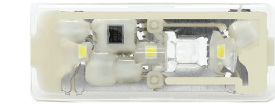
- 6500K LED cool white
- Dimensions - 80mm x 20mm
- Sealed and greased 2 Pin AMP connector
- Operating voltage - 9-16V AC/DC @ 120mA

## Standard blue 3 LED light bar



- Blue LED
- Dimensions 80mm x 20mm
- Sealed and greased 2 Pin AMP connector
- Operating voltage -10-14V AC/DC @ 120mA

## Snap-in 3 LED light bar



- 6500K LED cool white
- Dimensions - 62mm x 24mm
- Sealed and greased 2 Pin AMP connector

## Task 3 LED light bar



- 6500K LED cool white
- Dimensions - 80mm x 20mm
- Sealed and greased 2 Pin AMP connector
- Operating voltage - 9-16V AC/DC @ 120mA

## License 3 LED light



- 4000K LED cool white
- Dimensions - 80mm x 20mm
- Meets SAE L standards for marker lights
- Operating voltage - 9-16V AC/DC @ 120mA

## Dome style 3 LED light bar



- 6500K LED cool white
- Dimensions - 80mm x 20mm
- Sealed and greased 2 Pin AMP connector
- Operating voltage - 9-16V AC/DC @ 120mA



Additional LED color and temperature options available

## Single color ambient light engine



- Single color LED
- Dimensions – 20.25mm X 39.25mm X 10.6mm
- Sealed 2 Pin JAE connector
- Operating voltage - 9-16V

LED color options    

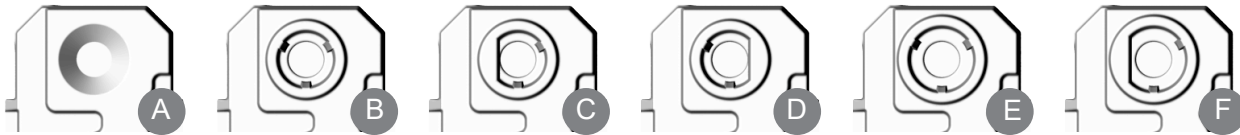
Custom color LED's available

## RGB - LIN controlled ambient light engine



- LIN controllable RGB LED
- Dimensions – 20.25mm X 39.25mm X 10.6mm
- Sealed 4 Pin JAE connector
- Operating voltage - 9-16V

## Standard light guide interface options



Light guides are available in round or D shape design 2mm, 4mm, 5mm, 6mm, and 8mm

## Custom light guide style options



### Flexible:

- Custom profile
- Custom diameter
- Uniform light without etching

### Rigid:

- Laser etch for light direction
- Custom light guide profile
- Custom diameter
- Custom bending





## Product Overview

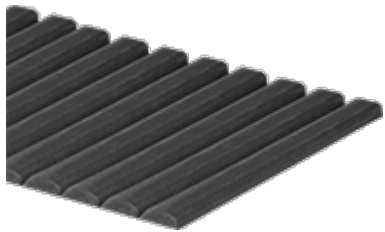
Made of 100% recycled materials, these sheets are a sustainable, low-cost alternative to standard materials often used as counterweights, such as lead and steel. They are also the highest density product replacement to steel counterweights. With a low carbon footprint, these sheets can help you meet criteria for sustainability certifications, such as LEED and Envision, or comply with company environmental initiatives.

## Flat composite sheets



Recycled Plastic and Metal Composite Sheet, 0.96" Thick,  
**7.25" X 17.25"**      **Weight = 15 lbs.**  
**10" X 17.25"**      **Weight = 20 lbs.**  
**14.5" X 17.25"**      **Weight = 30 lbs.**

## Ribbed composite sheets

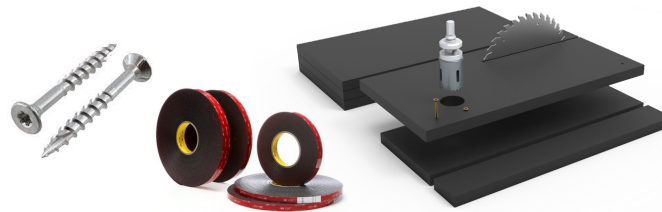


Recycled Plastic and Metal Composite Sheet, Ribbed, 0.700" Thick,  
**14.25" X 15.25"**      **Weight = 16 lbs.**

*Ribbed sheets can be sectioned off into 2lb. pieces to serve specific applications.*

## Customization & Mounting

Secondary operations such as punching, milling, and drilling are possible for specific product applications. Mounting options include, glue, screws, and tape.



Customized profiles, and lengths available



**Innotec also manufactures Headrest Stays, Work Lights, CHMSL lights, Lit Branding, Logo Projectors, Task Lights, Specialty Linear Lighting and many more.**

**Contact sales to discuss your application – [info@innotecgroup.com](mailto:info@innotecgroup.com)**



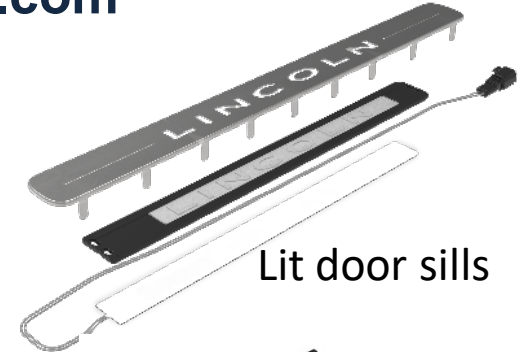
CHMSL light



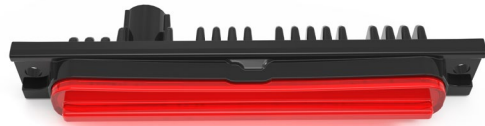
Projectors



Lift gate license light



Lit door sills



High output bar light



Puddle lights



Bar lights



Thin lit back lights



Headrest Stays



Work Lights



Back lit emblems